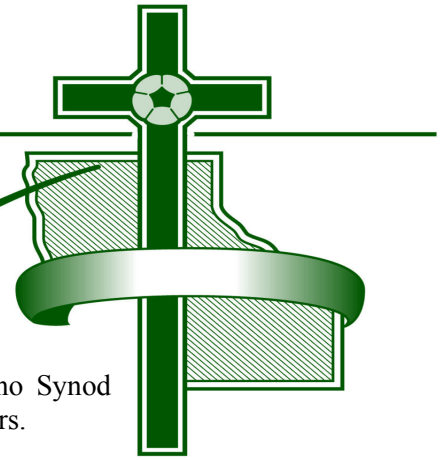


# CROSS Connection



The *Cross Connection* is a monthly publication of the Eastern Washington-Idaho Synod published for its clergy, associates in ministry, lay leadership and ecumenical partners.

## FROM THE BISHOP

**JANUARY 2012**

God's Beloved People,

AND SO, we enter a New Year on the calendar, a year the church entered with the first Sunday of Advent, 2011. The world thinks it has caught up with us!

For those of who suffer from any form of Seasonal Affective Disorder (SAD) these are brightening days. The winter solstice is behind us and the days, ever so slowly, begin to lengthen. We've once again celebrated the singular glory of God becoming human flesh in the birth of Jesus. It is time to look forward in anticipation of more time, more grace, more future in God's Kingdom of chronological time!

One of my favorite early celebrations is the Baptism of Jesus, celebrated this year on January 8, 2012. Do confirmation students still ask the question: "If Jesus is perfect, how come he has to be baptized?" I have a theory about that and can't for the life of me remember whether I've written about it before. For those of you for whom this is repeated news, press on to more important things. For those who still ask the confirmation question, stay with me.

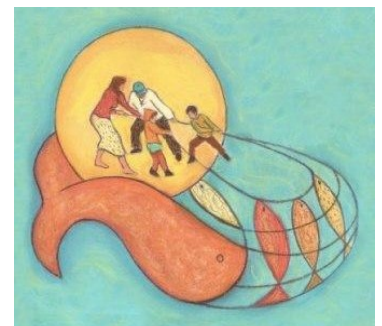
The question, of course, has to do with our notion (and the Jewish notion: See Mark 1:5) that baptism is a washing of and for regeneration from sin. What was old and past is left behind in the water and what is new is Holy Spirit, swallowed in the air we breathe arising from that cleansing water. It is a kind of spiritual molting by which we leave behind the old self and take on the gift of Jesus' life for our own. We will return again and again to this concrete memory of a time and place where we were claimed and washed and made new.

But why would Jesus seek John's baptism since Jesus is God in human flesh, and sinless according to tradition? Here's the image for me. As with our calendar, we live in a stream of time, passing. In baptism our sin is swept away, carried away to ... where? Today's environmental crisis warns us that this toxic soup is somewhere and must be dealt with.

The way I see it Jesus is downstream being baptized into our sin, as if all that is swept off and away from us then adheres to Jesus. As we are baptized and freed from sin, Jesus becomes heavier and heavier, his cloak and flesh layered with the waste of our lives. Jesus bears this encrusted flesh to the cross where in God's wisdom it is destroyed forever. Christ's resurrection confirms that sin is conquered, once for all, and that the new river of life is once again pure and spotless, the source of new life (Rev 22:1).

In John 1: 26 (Advent 3, 2011) John the Baptist says "among you stands one you do not know." I've always been curious about where Jesus was during that encounter. Perhaps we should look downstream. Jesus is downstream in time as well, waiting for us in this New Year.

Pastor Martin Wells  
Bishop  
msmmwells@aol.com



Jesus, First, Last, Always  
God's Grace, Our Gratitude  
The Spirit Powers Us  
No Fear! Transformation  
Connections Multiply Miracles  
Go, Tell & Serve

---

## FROM THE DIRECTOR OF EVANGELICAL MISSION

---

### **PAROCHIAL REPORTS – an opportunity you don't want to miss!**

by Pr Helga Jansons (Director for Evangelical Mission)

Nobody wants to do them, but it is worth it. Knowing the figures about your congregation by memory and referring to them will give you the authority that comes from knowing the facts about your church. I know that filling out Parochial Reports takes time and effort – but if you communicate your congregation's data and talk about your findings, it is an opportunity to make the case for mission and change. On the other hand it may serve as an affirmation and encouragement for the direction your church is taking.

There are some churches that don't want to know how many members there are in the church because they don't want to take people off the rolls and they don't want to know how few people are left. This is a reality churches need to face. There is a question that asks for active participation (#6) and if the difference between that and membership is large, it warrants discussion. It is really important to note average worship attendance. Often it is around 1/3 of membership, and in evangelical churches it is the other way around. What does that tell us?

If the question about ethnic origin (#8) does not reflect your community it is at least worth mentioning to parishioners. Find out your community data by putting in your zip code and congregation # in at [www.elca.org/research](http://www.elca.org/research) or just your zip code at [www.city-data.com](http://www.city-data.com). You will get instant information.

One question in the Parochial Report asks which programs or activities have been emphasized in the past year (#13). This is a really important question about purpose and priorities which the pastor can bring to church council. Now as to that whole bottom section about your congregation's financial stewardship – I used to leave that for the Treasurer, and I barely looked at it. Now I see that it is worth spending an entire Church Council meeting just looking at it in detail. I would define "Mission Support", as regular giving for the ministries of wider church and give some examples. I would explain "benevolence" as being additional support that a congregation can be proud of and thank people on Council and at the Congregational meeting for it.

Check out the *Financial Stewardship Worksheet* a helpful tool! Be sure to put in any grants you are receiving – and remember to apply again and read before you accept the grant. (I have to chase down a church that left the ELCA and needs to repay the grant).

I used to be so shy or embarrassed about all that "financial stuff" when I was a pastor. Now I see it all as part of educating people and thanking them for all their sacrifice and lifting up the joy of giving.

Evaluating ones educational program is worth a discussion beyond checking the yes/no box. That is obvious but don't take it for granted: not everyone has Sunday School for children any more, nor reason to have confirmation. If anyone checks "Create own materials" I would really like to know about it – that is the kind of creativity the synod can use. So too I am very interested in knowing who uses the Book of Faith Initiative (#35). When I served a large evangelical church they loved "Opening the Book of Faith". Looking at devotional, historical, literary and theological readings of the Bible was new for them – it is what Lutherans have to offer others. I used to do Parochial Reports with the Treasurer and Secretary and be glad to be done with them. Now I see them as something I would refer to all year round.

I hope you do.



# CALL PROCESS STATUS

<b>A</b> Process beginning/congregational study	<b>I</b> Interim	<b>AP</b> Associate/Assistant Pastor
<b>B</b> Names received or on-site visits in process	<b>P</b> Pastor	<b>VP</b> Visitation Pastor
<b>C</b> Call in process/issued	<b>CP</b> Co-Pastor	<b>AIM</b> Associate in Ministry
<b>NV</b> New Vacancy	<b>LP</b> Lead Pastor	<b>L</b> Lay Position
<b>TC</b> Term Call	<b>SP</b> Supply Pastor	<b>TM</b> Transition Minister (available for the open-ended call)

POS	LOCATION/CONGREGATION	STATUS	PASTORAL CARE	
P	Boise, ID - Redeemer	B.....	Dick Sansgaard	I
P	Connell, WA—Gideon Lutheran	NV		
P	Ephrata, WA - Holy Trinity	A.....	Phylis Stromme	I
P	Gifford, ID - Good Hope	A.....	Valerie Beesley	TEEM
P	Goldendale, WA - Christ the King	A.....	Ron Shipman	I
P	Kamiah, ID - Faith	A.....	Art Finney	I
P	Moscow, ID - Emmanuel	A.....	Robert Chenault	I
P	Mountain Home, ID - Grace	B.....	Tom Christensen	I
P	Post Falls, ID - Calvary	A.....	Steven Wee	I
P	Quincy, WA - St. Paul	A.....	Bill Voris	I
P	Spokane, WA—Bethlehem	NV.....	Roger Bruggink	SP
P	Spokane, WA - Central	A.....	David Kappus	TM
P	Spokane, WA - Messiah	A.....	Kimberly Meinecke	I
P	Spokane Valley, WA—Advent Lutheran	C.....	Matthew Larson	SP
P	Spokane Valley, WA— Holy Trinity Lutheran	NV.....		
P	Troy, ID - Troy	C.....		
P	Wilbur, WA - Wilbur	A.....	Tom Inch	I

## Social Security Administration’s 2012 Cost of Living Adjustment and Your Pastor’s Compensation

As you know our Synod’s compensation guidelines for pastors is based upon the Social Security Administration’s Cost of Living Adjustment, COLA, plus a .5% to 1.5% increase for another year of experience. This year the COLA is 3.6%. This means that your pastor’s salary + housing level from our 2011 compensation guidelines should go up 4.1% to 5.1%. From this adjusted amount add in 7.65% social security. As you know our Synod cannot dictate the salary and housing amounts our congregations pay. Nevertheless it is important that your pastor be compensated equitably. A couple of other facts that will help you make your decisions on your pastor’s compensation:

1. The ELCA Board of Pensions has announced that the contribution rates form medical and dental coverage will remain virtually the same as in 2011. See [https://www.elcabop.org/en/News\\_events/News\\_releases/2011/2012ContributionRates.aspx](https://www.elcabop.org/en/News_events/News_releases/2011/2012ContributionRates.aspx) This is good news!
2. Our Synod’s average and median compensation for pastors is compared with the other 65 synods in a survey found at <http://www.elca.org/Growing-In-Faith/Vocation/Rostered-Leadership/Leadership-Support/Salary-Benefits.aspx>. From this research we learn that the Eastern Washington-Idaho Synod falls within the lowest 20% of all ELCA Synods.

Of course many of our congregations feel the pressure of the world’s financial stresses. Will these anxieties determine your congregation’s budget priorities, or will God’s generosity and faithfulness and your congregation’s call to mission be your guide?

---

**IMPORTANT ANNOUNCEMENT (TIME SENSITIVE -RESPONSE NEEDED)**

---

**INSURANCE BROKERAGE ANTITRUST LITIGATION - CLASS ACTION SETTLEMENT**

**TO:** All Eligible ELCA Congregations and Synods having held liability and/or property insurance coverage through Charity First for the period August 26, 1994 through September 1, 2005, or any portion thereof

**FROM:** ELCA – Office of the Treasurer and Office of the Secretary

The ELCA was awarded a net amount of \$57,648.97 in settlement of a class-action suit involving Charity First, former administrator of the ELCA-endorsed synodical and congregational insurance program during the period August 26, 1994 through September 1, 2005.

On behalf of participating ELCA congregations and synods, the ELCA Churchwide Organization received the settlement amount. In accordance with action of the ELCA Church Council, the ELCA Office of the Treasurer and Office of the Secretary are to distribute settlement proceeds to eligible congregations and synods. Eligible congregations and synods are defined as those holding liability and/or property insurance coverage through Charity First during the period August 26, 1994 through September 1, 2005, or any portion thereof.

Each eligible congregation and synod must complete the attached Claim Form in order to receive a portion of the proceeds. Please submit the completed, signed Claim Form to the ELCA – Office of the Treasurer via U.S. mail or e-mail on or before **February 20, 2012**. Claim Forms postmarked or sent electronically after February 20, 2012 will be ineligible for the distribution. If you have any questions you may contact the ELCA Office of the Treasurer at 773-380-2892 or via e-mail at [otinfo@elca.org](mailto:otinfo@elca.org)

**THIS ANNOUNCEMENT AND A DOWNLOADABLE CLAIM FORM ARE AVAILABLE AT:**

<http://www.elca.org/Who-We-Are/Our-Three-Expressions/Churchwide-Organization/Office-of-the-Secretary/Congregation-Administration/Legal-Issues-for-Congregations.aspx>

---

**Sticky Issues for Church Properties**

How would you answer when...

- A church member wants to have a “party” at the church in which kitchen items will be sold to those invited?
- You’ve been asked by a local business to rent out a portion of your church parking lot for their use?
- A local for-profit dance studio wants to use your church building for classes?

Did you know that your church’s property tax exemption could be at risk with any of these activities? Learn to know more about your state’s laws. In Washington go to <http://dor.wa.gov/docs/Pubs/IndustSpecific/NonProfit.pdf>. In Idaho go to <http://www.legislature.idaho.gov/idstat/Title63/T63CH6SECT63-602BPrinterFriendly.htm> Wyoming has similar resources.

This writing intends to provide helpful information. However, use it at your own risk. This information is not legal advice – something that includes the application of information to specific circumstances. This writing does not provide legal advice. Although we attempt to provide accurate and useful information, each reader should consult a lawyer to interpret and apply this information to your particular situation. We are not lawyers and we do not accept any responsibility for any result that follows from applying this information.

---

*Administration Matters* is a bimonthly e-newsletter for ELCA congregational and synodical leaders. It addresses common, practical issues including finance, governance, risk management, tax, legal concerns and topics of interest about day to day operations and management in church settings.

**ADMINISTRATION MATTERS**  
AN ELECTRONIC NEWSLETTER FOR ELCA CHURCH LEADERS

To subscribe log onto: [www.elca.org](http://www.elca.org)

See Office of the Secretary, then Congregation Matters. There will be a sign up on the bottom right of the page.

---

## OUR CHURCH IN ACTION

### JANUARY 2012

*We ask that you keep the ministry of the synod as well as those listed below in your prayers*

#### ***Please Remember in Prayer ...***

.... Pr. Rick Evenson (Medical Lake, WA) and family as he continues his treatment for multiple myeloma.

.... Mrs. Marilyn Ulleland, wife of Pr. Duane Ulleland (Retired - Spokane Valley, WA) as she continues treatment for the reoccurrence of cancer.

.... Mr. Angel Manuel, father of Pr. Dawna Svaren (Pullman, WA) as he continues treatment for cancer.

.... Pr. Shelley Bryan Wee (EWU Campus Ministry) as she continues treatment for cancer.

.... Roger deVeer and Pr. Marilyn deVeer (Horseshoe Bend, ID) as he continues with health issues.

.... Pr. Bill Voris (Leavenworth) as he continues recovering from surgery.

.... congregations and rostered leaders in call processes (see page 3)

.... Scott Wells, brother of Bp. Martin Wells as he continues treatment for cancer

.... Marlin Helmick, (LaGrande, OR) father of Andrea Solheim and father-in-law of ELCA Chaplain Jeff Solheim now serving at Fairchild AFB



**Prayer Requests** . . . to be included in the Synod Prayer Requests, please email your request for inclusion in the *Cross Connection* to the synod office by e-mail [office@ewaidssynod.org](mailto:office@ewaidssynod.org) or call 509/838-9871.

#### **Our Chance For \$ 20,000**

The ELCA Board of Pensions is offering us the opportunity to earn a 2% discount on ELCA health contributions again in 2012. Each congregation and organization in our synod will receive a 2% discount on health contributions if 65% of our eligible ELCA-primary plan members complete the confidential Mayo Clinic Health Assessment January 1 – April 30.

In 2012 we could collectively save \$20,000!

If you have ELCA-primary health coverage, this savings depends on you. Take the 2012 Mayo Clinic Health Assessment on the EmbodyHealth web portal at [www.elcaforwellness.org](http://www.elcaforwellness.org) January 1 – April 30. We'll be one person closer to 65% participation, and you'll earn \$150 in your personal wellness account to offset out-of-pocket medical costs.

Instructions for taking the assessment are available in the Understand My Benefits section at [www.elcabop.org](http://www.elcabop.org).



#### **Parish Administrator Position Spokane Valley, WA**

Position available will become the lead staff person to ensure quality administrative practices in the church office. The administrator will be expected to extend the ministry of Advent Lutheran Church to our employees, our members, and the surrounding community. This person must possess excellent skills in using QuickBooks, MS Office Suite (Word, Excel, Publisher, etc.). Three to five years experience in general office setting and working with the public desired; have the ability to work at a fast pace within a variety of settings and circumstances, with composure and flexibility. Application and position description available at [AdventLutheranSpokane.org](http://AdventLutheranSpokane.org)  
Closes at 12:00pm, 1/03/12 EOE

## EDUCATIONAL OPPORTUNITIES

### The Lutheran Seminary Program in the Southwest Summer Program

May 27, 2012 ~ June 1, 2012

#### Spanish Language and Hispanic Ministry Intensive Language Immersion

an extension of Wartburg Theological Seminary  
and the Lutheran School of Theology at Chicago

Lectures on Latino cultural events, indigenous spirituality, theology and practical ministry This will include the liturgy in Spanish.

Registration Before Feb. 28: \$700.00 with shared room on campus. \$500 without lodging  
After Feb. 28: \$750.00 and \$600.00 respectively.  
(Cost of Spanish Bible extra.)

Rev. Eliseo Pérez-Alvarez, Ph.D.  
Rev. Jay Alanís, Ph.D.  
Regina Musselman, Ph.D.

#### Location:

The Campus of the Seminary of the Southwest,  
501 E. 32nd St. Austin, TX 78705.  
See [www.ssw.edu](http://www.ssw.edu) for map.  
P.O. Box 4790,  
Austin, TX 78765  
(512) 477-2666

### Crossings—4th International Conference January 22-25, 2012 • St. Louis, MO

#### The Gospel-Given Life: Discipleship Revisited

##### Presenters include:

Steven Kuhl	Kathryn Kleinhans
Richard Bliese	Felix Meylahn
Mark Mattes	Jerome Bruce
Marcus Felde	Lori Cornell
Robert Kolb	Martin Wells
Matthew Becker	Cathy Lessmann

[www.crossings.org/conference](http://www.crossings.org/conference)

### Midwinter Theological Conference

Dr. Cheryl Peterson

Jan. 30- Feb. 1, 2011

The Holy Spirit: Equipping and Empowering the Church  
for Mission

Izaak Walton Inn ~ Essex, MT

\$80/\$70 plus cost of food and lodging

[www.nrit.org](http://www.nrit.org)

### Byberg Preaching Workshop for 2012 January 30-February 1, 2012

Presenter: The Rev. Craig Satterlee

Chaplain: The Rev. Susan Briehl

Site: Our Savior's Lutheran Church of Issaquah, WA

Professor Satterlee received the B.A. from the University of Michigan, M.Div. and S.T.M. (pastoral care) from Trinity Lutheran Seminary, Columbus, Ohio, and M.A. and Ph.D. in homiletics and liturgical studies from the University of Notre Dame.

Professor Satterlee is the author of seven books, serves as editor of "Preaching Helps" for Currents in Theology and Mission, and frequently contributes to both scholarly and ecclesiastical journals. Dr. Satterlee's scholarly interests include the relationship of preaching and areas of congregational life and mission, including liturgy, spirituality, stewardship, mission, and leadership. He also studies patristic preaching, most notably that of Ambrose of Milan, and the worship of the early church.

[www.bybergpreaching.org](http://www.bybergpreaching.org)

### MONEY LEADERSHIP FOR THRIVING CONGREGATIONS

For all EWAIID Synod clergy and their spouses  
May 11<sup>th</sup>-12<sup>th</sup>

5pm Friday - 3pm Saturday at  
Clearwater Lodge ~ Davis Lake, WA  
(45 minutes North of Spokane)

May 18<sup>th</sup>-19<sup>th</sup> ~ South Idaho  
5pm Friday - 3pm Saturday  
Nazareth Retreat Center, Boise, ID

### Lutheran Staff Association

March 4-7, 2012

Cannon Beach Christian Conference Center  
Cannon Beach, OR

Cost: \$285

Questions? ~ Contact Megan Brannon 509-332-1985  
[tlc@trinitypullman.org](mailto:tlc@trinitypullman.org)

Save the date and look for more information soon!  
Include in the 2012 budget for your lay staff.

## HOLDEN YOUTH WEEKENDS

Sponsored by Trinity Lutheran College ~ guest artist Nate Houge

What are the Holden May Youth Weekends?

The Holden May Youth Weekends are retreat events for high school youth groups and their leaders, held at beautiful Holden Village, nestled in the beautiful Cascade Mountains. The program includes sessions, small group conversations, a service project, and free time activities. There are opportunities to enjoy the outdoors, including an afternoon hike to see a high mountain lake, mountains, and wildlife. Holden also has a recreation center, ice cream parlor, and plenty of space to sit and enjoy the beauty of God's creation!



This year's theme: **Keep Church Weird**

The Church is weird. For starters, our faith doesn't begin with what we have done for ourselves, but instead recognizes what God has done for us. In this world, that's different. Even then, the Gospel of Jesus is (and, therefore the Church should be) counter-cultural, where the first are last, weakness can be strength, and death actually means living life to the fullest. Then we have our peculiar churchy traditions: sprinkling water on babies, eating bread, drinking wine, Confirmation, putting handprints on the youth room wall, and all those church potlucks. Weird stuff, isn't it?

Our large group sessions will tackle such weirdness by exploring our freedom in Christ (Galatians 5:1), what it means to be a non-conformist in the ways of the world (Romans 12:2), how we live together as Christians (Acts 2:42-47), and how Christ calls us in our baptism (Galatians 2:20). Yes, the Church is wonderfully weird - so let's keep it that way!

Registration information and forms

Registration materials coming soon! Registration opens Feb. 1, 2012.

Cost is \$165 per person.

### Choose from three dates:

- Sat., May 19 to Mon., May 21
- Fri., May 25 to Sun., May 27
- Sun., May 27 to Tues., May 29

## EDUCATIONAL OPPORTUNITIES CONT'D

### 2012 Institute of Liturgical Studies

April 16-18, 2012

Valparaiso University

Theology, Music, Practice

#### Plenary Presenters

Gordon Lathrop

Fred Niedner

Marty Stoltz

Chris Scharen

#### Institute Seminars

Sarah Bjernebo

Phil Horrigan

Susan Johnson

Scott Weidler

Early Registration fee of \$225 until January 1, 2012

[www.valpo.edu/ils](http://www.valpo.edu/ils)

### North American Association Catechumenate Training Institutes In 2012

"GO, BAPTIZE, MAKE DISCIPLES" is a new training institute for pastors, worship leaders, and educators (e.g. directors of spiritual formation

**Phoenix** ~ February 24-26

**Baltimore** ~ April 13-15

**Minneapolis** ~ May 18-20

**For more information**, contact Pastor Rick Rouse, Project Director at [rrouse@comcast.net](mailto:rrouse@comcast.net) (612-710-7959) or Devra Betts, Registrar at [devra@holyspiritlc.org](mailto:devra@holyspiritlc.org) (702-232-8383).

You may also go to the NAAC website at [www.catechumenate.org](http://www.catechumenate.org) to download a brochure and/or register online for the institute of your choice. Scholarship applications are also available.

## SYNOD ASSEMBLY NEWS

**Plan Now**  
for the 2012  
Eastern Washington-Idaho  
Synod Assembly

**Go – Tell - Serve!**

**April 27-29, 2012**

at  
Wenatchee Convention Center  
Wenatchee, WA  
with  
Rev. Stephen Bouman

**ELCA Executive Director of  
Congregational and Synodical Mission**

Registration packets will be mailed in  
mid-January

## YOUTH/YOUNG ADULTS

At the 2009 Churchwide Assembly, amendments to the constitution, bylaws and continuing resolutions of the ELCA were adopted to allow for expanded roles for youth and young adults in the governance in all expressions of our church including our synod assembly. The goal is that at least ten percent of the synod assembly voting members would be persons who are youth (not yet 18 when elected/appointed) and young adults (between the ages of 18 and 30 when elected/appointed.) As your synod council explores ways to implement this goal for future assemblies, we are asking congregations to have conversations with the youth and young adults in their midst. Please consider electing/appointing a young person as one of your voting members if you do not already do so. Lifting up and empowering our young people to serve is part of our calling as a congregation!

**Karla Olson**  
Synod Assembly Manager  
[assembly@nctv.com](mailto:assembly@nctv.com)  
208-263-3050

At the 2011 Assembly, 1 voting member was a youth (less than 1/2 of 1%) and 7 were young adults (less than 3%). Please consider electing a young person as one of your voting members if you do not already do so.

## A MISSION PLAN for your Congregation

The ELCA is encouraging congregations to develop a Mission Plan and in doing so is providing resources for churches to do this. As Director for Evangelical Mission I am available to assist you in this process. There are some bible studies, questions and a process that you can use. If you have not done this before, it is not too complicated but very effective. If you have done some work on it, you may like to review what you have. Let me know if I can be of help:  
[helga.jansons@elca.org](mailto:helga.jansons@elca.org) phone: (509) 380 7122

## CONGREGATION TREASURERS

### PLEASE NOTE:

The Region 1 Financial Services Office will not supply remittance forms and mail them to your congregation. The form is available for download on the synod website at [www.ewaidsynod.org](http://www.ewaidsynod.org) under Resource Documents. Please use the form for submission of your mission support and benevolence. The Please use the following for sending in mission support and designated gifts: PO Box 94432, Seattle, WA 98124-6732.

## Annual Reports

### PAROCHIAL REPORTS

Mailed from the Churchwide office ~ they can also be accessed on line at: <http://www.elca.org/ELCA/Forms.aspx>  
Please call the Synod Office if you need your password.

### REPORT TO THE BISHOP

for rostered leaders to report to Bishop Wells events of the past year. An electronic version can be found at:  
<http://www.elca.org/Who-We-Are/Our-Three-Expressions/Churchwide-Organization/Office-of-the-Secretary/Synod-Administration/Rostered-Leaders-Report-to-the-Synod-Bishop.aspx>

### STATEMENTS OF INTENT

These were mailed to each congregation in November 2011. They are also available on the Synod website under the Resources tab. (*Cameron Emanuel—Kendrick, ID was the first to submit their report! Thank you!*)

### CONGREGATION INFORMATION FORMS

These are available on the Synod website under the Resources tab and will also be mailed in early January.

## IDAHO INTERFAITH ROUNDTABLE AGAINST HUNGER

Idaho legislature will be starting soon and IIRAH will be watching for issues that affect the hungry of Idaho. Two issues we are watching is support for continue increasing of the Idaho Grocery Tax Credit and changes to SNAP (Food Stamp program) with going to a staggered issuance of SNAP from one day to 10 days which is a best practice. Also being proposed is changes to SNAP ID's to help with fraud & abuse. IIRAH watching Congressional decisions on anti-hunger programs. IIRAH web site [iirah.org](http://iirah.org) will update listing for next Boise gathering that will be coming soon and will feature presentations from Emory Hunger Fellows who have been working in the Southern Idaho area. If you or others want to be a voice for the hungry of Idaho contact IIRAH at [ideroundtable@yahoo.com](mailto:ideroundtable@yahoo.com).



**ELCA Malaria Campaign**  
**Evangelical Lutheran Church in America**  
 God's work. Our hands.

The ELCA, through the ELCA Malaria Campaign, is joining hands with eleven Lutheran church bodies in Africa and becoming part of an historic global movement to say, "enough is enough!" No child, no person, should die of a

disease that is both preventable and treatable. Therefore the ELCA Malaria Campaign has committed to raise \$15 million to help prevent, treat and educate communities in Africa about malaria and eliminate deaths from this disease—for good.

For a long time, the ELCA has been supporting clinics and programs in Africa to provide health care. Now we're focusing on malaria with a new intensity. Malaria kills 800,000 people each year, most are children under five. That's a child every 45 seconds.

Lutheran churches in Africa aren't just places of worship. They are the center of community life. That's what makes our work—the work of the church, through churches—perfectly positioned to make a difference.

The ELCA Malaria Campaign funds programs of our companion churches that provide life-saving health care—including

- medicine to treat malaria
- train health care providers and church volunteers to diagnose and treat malaria
- teach people how to protect themselves from the mosquitoes that spread malaria,
- recognize symptoms and seek treatment
- distribute insecticide-treated mosquito nets and provide training on their use
- provide preventative medication to protect pregnant women and their babies
- encourage governments to provide adequate health care and malaria prevention activities
- support water treatment projects to control the environments where mosquitoes breed

• Check or money orders:  
 ELCA Malaria Campaign  
 P.O. Box 71764  
 Chicago, IL 60694-9300

Please make check payable to  
 "ELCA Malaria Campaign."

• Credit card by phone: 800-638-3522

• Give through your congregation. Make your check payable to your congregation, indicating "ELCA Malaria Campaign" in your check's memo line. Place your gift in the offering plate.



**EASTERN  
WASHINGTON  
IDAHO SYNOD**

of the  
Evangelical Lutheran Church in America

314 S. Spruce St., Suite A  
Spokane, WA 99201-5823

**ADDRESS SERVICE REQUESTED**

NON-PROFIT  
US POSTAGE  
PAID  
SPOKANE WA  
PERMIT 277

**January 2012 Newsletter**

Please reproduce any and all articles for publication in congregational newsletters or bulletins. The *Cross Connection* is also available on the synod Web site at [www.ewaisynod.org](http://www.ewaisynod.org). **Deadline for articles is the 5th of each month.**

## SYNOD CALENDAR

### December

- 25 The Nativity of our Lord
- 26 Synod Office Closed

### January 2012

- 8 Renewed Evangelizing Table
- 22-23 Crossings Event
- 27-28 Synod Council—Spokane
- 30 Byberg—Issaquah
- 30 Mid-Winter Theological Event-Essex, MT

### February

- 4 Legislative Forum-St. John’s Cathedral  
Spokane, WA
- 15 Send in Parochial Reports
- 24 LCS NW Chocolate & Champagne Gala  
Spokane, WA

### March

- 1 Deadline for Resolutions and nominations  
for 2012 Synod Assembly
- 4-7 Lutheran Staff Association-Cannon Beach
- 15-16 Dean’s Meeting—Spokane



**Eastern Washington-Idaho Synod**  
**Evangelical Lutheran Church in America**  
God's work. Our hands.

### STAFF

Bishop.....	The Rev. Martin Wells
Assistant to the Bishop .....	The Rev. Mark Nelson
Director for Evangelical Mission .....	The Rev. Helga Jansons
Program Administrator .....	Cathy Steiner
Assembly Manager .....	Karla Olson